



Meditation Monthly International

Agni Yoga and the Christ

And how can one promise anything when the key to all achievements is in man himself, and without his participation no one else can do anything for him? The Highest Teacher can help him only at a certain period when the spirit is ready to open the heart to the Call and to put into action his dormant divine forces. However, the strengthening of these forces is possible only if the disciple constantly continues to intensify his efforts to perfect and transfigure his inner being. Collaboration is a necessary condition in everything. Therefore, you should point out to all newcomers that there are endless degrees of discipleship and of the approach to Light, and that each one can occupy only that degree which corresponds to his past accumulations; likewise, he can ascend the ladder only by his own intensive striving in the present.

Letters Of Helena Roerich II, 22 July 1935

First of all, the Teaching requires independence of action from the disciple. The Teaching gives direction, generously giving the precious hints, but the disciple must himself "with his own hands and feet" build his path. Therefore, do not expect ready-made formulae. From small hints build the great structure.

Letters Of Helena Roerich I, 28 August 1931

When the disciple realizes in his heart the joy of the path, a path which knows no friction because all is transformed in the joy of Service, then it is possible to open before him the Great Gates. Amidst higher concepts the disciple must remember in his heart the records of Light. Amidst the frightening manifestations the disciple must remember about the records of darkness. There is inscribed upon the Shield of Light: 'Lord, I come alone, I come in a manifested achievement. I will reach the goal, I will reach it!' And upon the Shield of Light is inscribed: honesty, devotion and self-

abnegation. But fearful are the records of darkness. Let the hand of the disciple refrain from inscribing upon these permanent scrolls: lie, hypocrisy, betrayal, selfhood...

Letters Of Helena Roerich I, 26 April 1934

In the question of the acceptance of a disciple, his karma plays the main role. Precisely, in connection with discipleship it is most essential to realize the law of Karma and to comprehend it in all respects. Thus, a person overburdened with karma cannot hope to become a close disciple. Only those whose earthly karma is almost completed can be accepted among the closest disciples. There are few who realize what a heavy burden the Teacher takes on by accepting a disciple.

Letters Of Helena Roerich I, 29 August 1934





**White Mountain
Education Association
Meditation Monthly International**

VOL. XXV ISSUE NO. 3

MMI can be found on the Internet
World Wide Web Address -
<http://www.wmea-world.org>
E-mail - staff@wmea-world.org

Copyright 1982-2007
White Mountain Education Association
All rights reserved.
Any reproduction in whole or in part
without written permission is prohibited.

CONTENTS

Agni Yoga & the Disciple	1
Networkers' Letter	2
The Progress of the Disciple	3
Calendar	7

Cover picture, *Bagavan* by Nicholas
Roerich

Networkers' Letter

Dear Friends,

What is a disciple? A disciple is one who is dedicated to the labor and vision of the next link in the chain of Hierarchy. A disciple is recognized by his or her dedication, devotion and faithfulness to the Tower of Light. A disciple is a torchbearer.

A disciple lives a life of sacrificial service. He travels the lighted path. Whenever a beacon of light shines forth, there you will see gathered a group of disciples, a Center of Light, dedicated to the Plan of Hierarchy.

A disciple is one who is dedicated to an idea, ideal, or principle that will lead humanity into the next step of evolution; he or she is progressive and real. I can always recognize a disciple by the expression of his or her Truth, or his or her Reality. Is she "real" in all that she says and does? Does her word mean something or is it superficial? Does yes mean yes, and no mean no? When he says, "I love you," does he mean it forever or for the moment? Is he faithful to his promises and commitments or is he indecisive in what he says and does? The life of discipleship demands one to be dedicated, stable, and committed, as well as fearless, courageous and daring. Her leadership is led by her invincible spirit, and she is obedient to the higher levels of consciousness.

When an advanced disciple of the Teaching says, "I love you," it means for eternity. It means he loves you from the level of his illuminated soul. It does not mean "I love your personality," for the personality is transitory, always fluctuating up and down, always going this way and that way, in a state of chaos. A true and advancing disciple is a flame steady in the darkness.

A disciple is not necessarily a religious person, but she is spiritual. A disciple is not known for her religion but for her Light, her presence, honesty, sacrificial service, humility and directness. A disciple speaks directly and honestly through the love in her heart.

When a disciple is your friend, you know you can trust that person from top to bottom, from the inside to the outside. Her inner thoughts are the same as her outer expressions; there are no cleavages in her nature.

But you might say, "Look at her humanness. She has had a failed marriage, has experienced failures in her career, has had family difficulties and has suffered defeats. It is, in fact, the trials and tribulations in the discipleship life that has honed the one for illumined leadership, where the challenges and tests and many difficulties, successfully passed, prepared her to be a warrior of light in the darkness of life. Discipleship is leadership; she first learns to lead herself and then others.

It is important to those in the Teaching that a disciple is recognized not as a particular disciple of one Holy One but as a disciple of all the Great Ones Who are the Saviors of the world and Who provided a legacy for all of humanity to follow—Great Ones such as Krishna, Zoroaster, the Christ, Moses, the Buddha and others.

It is my hope that this year will find you walking the lighted path of discipleship, that you will embrace your challenges, tests, trials and tribulations in such a way that the process of such striving will advance your consciousness and beingness; that you will become a beacon of light and shine that light in your field of service, making a difference in your personal life, family life, group life, and international life.

Love,

President, WMEA

The Progress of the Disciple

by Rev. Joleen DuBois

from her upcoming book,
Sunday Talks: Discipleship and Human Progress

This talk is about the progress of the disciple. Some may find the information challenging, while others may say that it makes them feel as if they'll never "get there." But others of you will be inspired, not to see what you have not yet accomplished, but to see what you have accomplished and the direction toward which your soul is taking you.

A disciple is one whose talents have not only shaped him or her for a particular field of service but have equipped his or her consciousness with the beauty, harmony and intelligence of synthesis.

This definition of discipleship is important to remember because it's "active." The words you read here aren't simply words on paper, but fiery words that show us what we want to be in our own discipleship.

A disciple serves according to the level of his or her consciousness. No matter what the field of service may be, it will be purposefully integrated into the whole. For example, if a disciple's field of service is education, he or she will teach the principles of education in such a way that those principles will be in synthesis with the advancing principles of politics, philosophy, art, religion, science, and economics. What is taught will not be in contradiction or opposition to the other six fields of service.

A disciple is a person of the future, not of the past. His or her service will always be progressive and advancing, not regressive and stagnant. Understanding this, we can look at our own field of service and measure our progress and growth against this concept. We start with our thoughts: Are they regressive and stagnant? Are they filled with fear, or condemnation? Are they of a judgmental nature? Are they negatively critical? If our thoughts are progressive, constructive, harmonious and creative, then we are disciples, for a disciple is of the future and for the future.

You may be a disciple of a certain degree, let's say the "accepting degree," but your coworker may be an aspirant, a pledged disciple, or an accepted disciple. This is why you don't want to measure your level of service and commitment against the service and level of commitment of your coworkers. The only thing for you to consider is how your own service is integrated into the service of those around and about you. Is there integration, and does your service create an atmosphere of harmony and synthesis with your coworkers?



Endless Tracks by Nicolas Roerich

What is the whole? The whole includes all kingdoms in nature: the mineral and plant kingdoms, the animal and human kingdoms, and the Superhuman Kingdom. The progressive service of a disciple will be in balance and harmony with the future vision of all kingdoms.

The "whole" is also dependent upon one's level of consciousness. For example, if you take a look at your professional life, and it is in alignment with the purpose of your life, you will find yourself in a leadership role. In that leadership role, you will be serving the whole within the environment for which you are responsible. The president of a country is responsible for the whole of the country. Think of the Secretary General of the United Nations and what the "whole" is for that person. *A disciple is one who lives not for himself or herself but*

for the world, not for his or her personal interests and achievements but for the finest interests of the whole.

How is this progressive attitude developed? In several ways:

- Soul contact
- Ashramic contact
- A Vision
- Sense of responsibility
- Sacrificial service
- Personal karma that is minimal and does not interfere with the service work
- Dedication to the Plan of Hierarchy

What is Soul contact? Most human beings have a Solar Angel. The purpose of the Solar Angel is to help the unfolding human soul progress within the time frame of the Plan of Hierarchy. The Soul is also one of the main inner energy resources for all disciples. Conscious contact with the Solar Angel means the disciple now has contact with the whole. What does contact with the whole indicate? In *Leaves of Morya's Garden*, there is a hint: "My warriors, guard thyself with the Shield of God's Will, and the Divine Song will ever find echo within thee. Before the Deluge, when men were wedding and feasting and bargaining, Noah was already selecting the most stalwart oaks for his Ark."¹

A disciple is a person who is in the process of moving from the stage of individualization, which took place over 18 million years ago, to integration and Soul-infusion.² Soul-infusion occurs when the human soul is no longer controlled by the mechanical behavior of his physical, emotional and lower mental nature; this is a process that takes place over several incarnations of training, during which time the human soul must graduate from many difficult tests and experiences. If you are in the same place today that you were, for

example, ten years ago, you need to reevaluate your progress and determine where you are stuck. You can even see, with careful observation, when that situation or condition “stuck” you. It is a painful experience to discover and observe, but once that painful experience is overcome, you move into freedom—the freedom to progress.

Soul-infusion is a gradual process, during which time the human soul is flooded with the Light, Love and Power of the Solar Angel, and the disciple’s direction becomes increasingly accelerated and progressive. When your human soul is really flooded to the point that it is no longer an imagined experience, it becomes a real experience for you. When you become flooded with the Light, Love and Power of your Solar Angel, you begin to have a sense of direction from which no one can pull you away. It is a training program through which your maya, glamors, and illusions are sublimated, transformed and transfigured, and you have been successful in conquering the *Dweller on the Threshold*.

It’s important to know about the Dweller on the Threshold because it’s inevitable that at some time, you are going to meet the Dweller (and I suspect that some of you already have). The Dweller on the Threshold *is* the personality. It is the combined, or collective, elemental of the physical, emotional, and mental bodies with which the human soul has been identified for millions of years. When the collective elemental feels that the human soul is traveling the path of freedom, progressing from the lower consciousness to the higher and striving to fuse with the Solar Angel, this is when the soul is preparing itself to take control over and master the lower elementals. It is at this time that the Dweller prepares Itself to block the path of ascent of the human soul, and by doing so, prevent it from entering into the Spiritual Triad, the Holy Triad. If you study the Bhagavad Gita, this is the description that takes place in that first chapter about the battle and what Arjuna is facing.

The first step of individualization is for the Spark to see Itself apart from the herd consciousness, apart from animal consciousness. The second stage of progress is Soul-Infusion, when the soul can communicate in

wholeness, consciously and experientially. This process takes place by way of conscious contact with the Solar Angel, Who is a member of Hierarchy. The Solar Angel holds the plan for the human soul, for the time when it awakens in the Light of the Solar Angel and begins to advance on the ladder of evolution. The human soul is going from stage to stage until it is able to function in total obedience to the Solar Angel, the Master, and the Ashram of the Master.

Until that time, and again through the different gradient stages of your discipleship—from “accepting” to “pledged” to “accepted” disciple, and then finally moving into the Heart of the Master—you will find that a little bit of that purpose will in-



Viking’s Daughter by Nicholas Roerich

spire you. It becomes for your consciousness an attracting magnet, and that is why you come into incarnation and are drawn to a particular profession, or into a particular family, or to a specific geographical location. Initially, and perhaps ultimately, you won’t know why; you are simply performing a “duty” or are engaged in an intense activity. Sometimes you’ll be inspired. For example, you go to college, you graduate with your major, and a few years later you determine that the major you chose is of no consequence to you because you no longer have any interest in it. This is often what happens when more of that purpose is revealed to you. This is the purpose that relates to the plan of your soul, and you quickly make changes and adjustments. Your family thinks that you have “lost it.”

Your parents are dismayed because they’ve spent thousands of dollars on your education, and now you’re saying, “Well, that’s not what I need to do.”

There is still, however, an unknown quality, although it is not until your soul awakens on that higher mental plane, and you become fused with the light of the Solar Angel, that the Plan will be fully revealed to you. When the disciple achieves Soul-Infusion, the human soul has awakened to his own inner Divinity. He sees himself as the future Self. *He is no longer buried in the fragments of his everyday life and now lives for the future, for the whole.*

• *Ashramic contact.* The Ashram I am talking about here is an earthly Ashram, which is an outpost of the Master’s Ashram. When the disciple is striving on the path of freedom, trying to gain control over his various physical, emotional, and mental problems, he not only begins to search for the Teaching but progressively finds his Soul Group, his Ashramic Group. An Ashramic Group is different from a personality group. A personality group is comprised of people who are focused on satisfying their little self, their personality nature. This is why we have millions of personality-oriented groups.

An Ashramic Group is comprised of people who are striving to build a new civilization—a new global, planetary civilization. It consists of those who are progressive and daring, who are working to develop new levels of leadership for humanity: leadership in politics, education, philosophy, the arts, science, religion and economics—whether nationally or internationally—based on the Plan of Hierarchy.

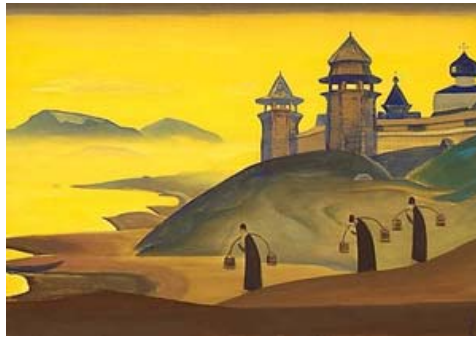
Former Soviet President Mikhail Gorbachev gave a presentation during the groundbreaking Forum 2005 in Tokyo and discussed what kind of a new civilization we are creating. During his speech he said, “In order to create a sustainable and prosperous world, we must preserve all the ethnic, cultural and natural diversity the world has to offer.” These words should ring true to any Agni Yogi student because these are the words of a disciple. He stated that

the world today faces three main global challenges: 1) security, 2) poverty and backwardness, and 3) ecological catastrophe. He also said, “*There is a serious lack of leadership in the world today.*” This is why we must put disciples into leadership roles in all fields of human endeavor, and we must be ready to support them. These disciples must come out of their “caves” and position themselves into leadership roles to help build this new civilization.

The aspirant. At first, the aspirant travels from group to group trying to find things that will interest and entertain her personality bodies: her physical, emotional and lower mental bodies, where very little is expected from her in return. The aspirant, at this stage of development, is still buried in the fragments of her everyday life, but she is growing. This is not a negative statement; it is a statement about the aspirant’s level of consciousness. It is not until the aspirant becomes saturated with many lifetimes of illuminating experiences that she begins searching for something beyond her personality, a search that will eventually lead her to her Ashramic Group.

The disciple. When the disciple begins to yearn for her Ashramic Group, she will pass through extremely difficult conditions and situations, meeting almost impenetrable obstacles. But through it all, she will become spiritually regenerated. For example, when life is hard and the consciousness is weary, where there is seemingly no way out, when the disciple reaches for the light through the darkness, she begins to feel that a helper, the Guiding Hand, is speeding to her aid, bringing her the Sword of Courage.

• *A Vision.* The progressive disciple will have a vision in her heart for humanity, a vision that she was born with or a vision given to her by her Teacher, Master or Ashram as a result of living a sacrificial life. It will be a vision that guides the disciple’s every waking moment. A vision is always progressive. A vision is multidimensional and in continual unfoldment as the disciple advances in consciousness and lives the purpose of her life.



And We Labor by Nicholas Roerich

When we read about the life of Nicholas and Helena Roerich, we see such examples. Nicholas Roerich had a vision that art would unify all humanity. He said, “Art is one—indivisible.” He believed that art would be the manifestation of the coming synthesis. He wrote, “The gates of the ‘sacred source’ must be wide open for everybody, and the light of art will influence numerous hearts with a new love.” He said, “We should have not only museums, theatres, universities, public libraries, railway stations and hospitals, but even prisons decorated and beautified. Then we shall have no more prisons.”³ Of Nicholas Roerich’s writings, the famous Indian poet Tagore wrote: “Nicholas Roerich has a place all his own in the world of Art. His pen too has carved out a niche for itself in the world of letters; ... and in the hands of Nicholas Roerich it has for long exerted an influence which is at once elevating and instructive. A call to Beauty implies in its essentials an appreciation of the Vision which the artist would ... share with the world at large.”⁴

• *Sense of Responsibility.* A disciple is always responsive to the outpouring energy transmitted to him or her from the Solar Angel or the Ashram. As his or her responsiveness increases, so does his or her sense of responsibility. The greater the sense of responsibility a person has, the greater the contact with the Ashram or with the Solar Angel. In the beginning, he or she is tested in seemingly insignificant ways. For example, can she be punctual? Can he keep his promises, his commitments? As a developing leader he takes responsibility for the failures of his children, his business associates, all those for whom he is responsible—and learns from these failures without negative criticism, condemnation, or judgment. As the disciple progresses,

he becomes increasingly responsible for his thoughts.

A *pledged disciple* feels that she is in the presence of a great light and all her actions on the three levels come under the influence of this light and become purified to fit the goal of service. She owns nothing for herself. When such a life continues long enough, incarnation after incarnation, and if she persists toward her goal in spite of conditions, in spite of many hindrances, obstacles and attacks, she will be accepted as a coworker of the Master.

We want these words to become experiences. We want to educate our soul in such a way that, lifetime after lifetime, we will become increasingly aware of the importance of service. It’s not self-service; it is sacrificial service to the Plan of Hierarchy, so that this planet and humanity as a whole will evolve with our entire Solar System. This is so we have a place to return to—a beautiful and progressive place—life after life.

An *accepted disciple* may have an opportunity to meet his Master face to face. This can take place physically or within the Ashram. He begins to visit the Ashram in the higher mental plane or intuitional levels, where he becomes directly impressed by his role in the Plan.

• *Sacrificial service.* To live a life of sacrificial service, one is no longer serving through one’s personality nature, but serving as a soul. At this point in one’s advancement, the unfolding human soul has awakened on the higher mental plane, and the seventh, eighth, and ninth petals of the Lotus are in the process of blossoming. Sacrificial service means that through one’s actions, feelings and thoughts, people and objects are made sacred. To make people and objects sacred means one is shaping others for the greatest good of humanity.

For example, when I was working as a musician, I was promoted from a smaller orchestra to a major symphonic orchestra with a well-known conductor. Before I was promoted, I was instructed by a master violinist, who taught me not only musical technique but helped me shape my physical, emotional and mental bodies. He taught me

endurance, discipline, sensitivity, and more. My violin practice was no longer limited to only two or three hours a day, for this great master teacher gave me physical, emotional and mental disciplines to practice all day long. The long hours of practice and discipline resulted in my being promoted to a more sensitive level of musical performance. Sensitive musical performance is the expression of the soul awakened and functioning in the Higher Self. Sacrificial service means living a parallel life, as much as possible, to your Solar Angel.

• *Personal karma is minimal and non-interfering with one's service work.* There comes a time in the work of the pledged and accepted disciple where his or her personal karma no longer interferes with his or her life's work. Where there may be fragments of personal karma (family karma, health karma, financial karma, etc.) pounding on the door—karma that is usually intensified and demanding, and needs to be addressed—such karma will not interfere with the life's work of the disciple. Debts of karma are purifying to the personality, giving the person opportunity to progress to higher levels of consciousness. People who have reached this stage in their life are dependable. They can be counted on to keep their commitments and promises; they can be depended upon to keep their silence not just in their speech but in their thoughts as well.

It is important that the disciple pays his or her karma. Master M. wrote, "If karma be diverted, it will react against thee. The travail of the spirit is the one ladder of the shortest way. The suffering of a decade is crowded into a day in the lives of the chosen ones."⁵ Once the majority of the disciple's personal karmic debts are paid, he or she then faces the next step, which is the karma of his or her nation. There is no escape. The Ageless Wisdom instructs that we must pay our personal, national and global karma until the very last debt is paid. We must do "good" to erase our karma.

• *Dedication to the Plan of Hierarchy.* As you progress, as your soul evolves, you will gradually become inspired by the Plan of Hierarchy. The Plan of Hierarchy is about progress, about perfection. If you recognize that each living entity has a soul, and the plan of that soul is to advance, you will also realize that the plan of the soul is in synchronization with the Plan of Hierarchy. This Plan is constructed around the

process of perfection: perfection of all kingdoms in nature, even Their own.

To evolve, to perfect yourself, you must be illumined. To be illumined creates a pathway in which you see yourself exactly as you are—with no excuses, no rationalizations, no blame given to others. For example, if you engage in group meditation during the monthly full moon, the illuminating energy will send a beam of light to your consciousness and give you a test to pass. The light will show you something about yourself that you do not like. Maybe you are smoking, and the beam of light will reveal to you how ugly smoking makes you. If you capture that light in your brain and take it to heart, you will find ways to exercise your will over the control smoking has on your psyche, and you will quit. You see, you cannot escape from yourself.

Illumination coming from those greater than yourself—your Teacher, your Solar Angel, your Master—will also cast a beam of light upon your consciousness and inspire you with a vision as to how to improve yourself to be of service to the Great Ones sometime in the future.

Dedication to Hierarchy is to offer your talents, your treasures to a Great Cause. This is the path that dedicated disciples travel. For example, the consciousness of the WMEA group is dedicated to building and teaching a University-level education, which is part of the Plan: to offer an education to people in which their soul will awaken in such a way that they will become fused with their Solar Angel; and in becoming fused with their Solar Angel, they will begin communicating with and serving the whole.

In what ways can you serve Hierarchy?

1. Dissipate fear. This is vitally important at this time in the world, where many in leadership positions are instilling fear in those whom they lead. We must see these things and repel this fear from our thoughts. Fear distorts reality.
2. Cultivate right human relations.
3. Spread the Ageless Wisdom Teaching.
4. Create study groups on the Ageless

Wisdom.

5. Meditate.
6. Work for the annihilation of competition. Competition divides family members, groups and nations.
7. Create universities and colleges that will teach the new education.⁶
8. Give the Teaching of One Humanity.
9. Develop courses and write books about the infiniteness of the soul.
10. Build world peace.

Mikhail Gorbachev said, "What kind of a world should we strive to create? Let me remind you that in a speech delivered in 1963 at the American University, U.S. President John F. Kennedy stated that the most important topic on Earth is world peace. 'What kind of peace do I mean? What kind of peace do we seek? Not a Pax Americana enforced on the world by American weapons of war. Not the peace of the grave or the security of the slave. I am talking about genuine peace, the kind of peace that makes life on earth worth living, the kind that enables men and nations to grow and to hope and to build a better life for their children—not merely peace for Americans but peace for all men and women—not merely peace in our time but peace for all time.'" Gorbachev closed his talk by saying, "We must study human nature and all work together so that by the middle of this century, we will have a system in place that will be able to guide the entire world."

¹ *Leaves of Morya's Garden: The Call* (New York, N.Y.: Agni Yoga Society, Inc., 1953), sutra 120.

² Integration occurs when the physical, emotional and mental elementals are one-pointedly aligned with the human soul, and the human soul is in contact with the Light of the Presence within. Integration is the right relationships between the parts of your human constitution.

³ Nicholas Roerich, *Beautiful Unity* (Bombay, India: Youths' Art and Culture Circle, 1946).

⁴ *Ibid.*

⁵ *Leaves of Morya's Garden, The Call* (New York, N.Y.: Agni Yoga Society, Inc., 1953), sutra 232.

⁶ The WMEA has published a series of books by Joleen D. DuBois, its founder and president. To learn about the new education, we recommend the first volume of *Sunday Talks on the Ageless Wisdom: Education for the Soul*.



February / March 2008 CALENDAR OF EVENTS

The Florida (Sarasota)
WMEA Study Group meets at 9:30 a.m., on alternate Thursday mornings in Sarasota. Please call **Ginette Parisi at (941) 925-0549** for complete information.

The Ohio (Marysville)
WMEA group meets monthly for Sun Festivals. For upcoming meeting dates and times, please call **Kathy O'Conner at (937) 642-5910**.

The Puerto Rico WMEA Group meets weekly to study the Teachings. Please call **Saskia Frau at (787) 780-6276** for complete information.

The Oregon (Lebanon)
WMEA Study Group meets each month for a meditation gathering. Please call **Vickie Stevens at (541) 258-6142** for complete information.

The Colorado (Longmont)
WMEA Study Group meets each month for New & Full Moon meditation gatherings. Please call **Doreen Trees at (303) 651-1908** for complete information.

February 2008

- Sun. 3** Sunday Service: Meditation, Singing, and Lecture "**Three Categories of Man**" with Rev. Joleen DuBois, 10:00 a.m., Creekside Center
Noon: *Men's WMEA Study Group* – Prescott Pantry
- Tue. 5** Class: **Agni Yoga Study Group, Heart**, 7–8 p.m., WMEA Center
- Wed. 6** Class: **Discipleship & the Ageless Wisdom**, 7–8 p.m., WMEA Center
- Sun. 10** Sunday Service: Meditation, Singing, and Lecture "**Universal Brotherhood & the Teachings**" with Rev. Joleen DuBois, 10:00 a.m., Creekside Center
- Tue. 12** Class: **Agni Yoga Study Group, Heart**, 7–8 p.m., WMEA Center
- Wed. 13** Class: **Discipleship & the Ageless Wisdom**, 7–8 p.m., WMEA Center
- Sun. 17** Sunday Service: Meditation, Singing, and Lecture "**The Experiences of the Ageless Wisdom**" with Rev. Joleen DuBois, 10:00 a.m., Creekside Center
- Tue. 19** Class: **Agni Yoga Study Group, Heart**, 7–8 p.m., WMEA Center
- Wed. 20** **Sun Festival of Pisces**, Meditation and Lecture with Rev. Valarie Drost, 7–8 p.m., WMEA Center
- Sun. 24** Sunday Service: Meditation, Singing, and Lecture "**Tests of the Path**" with Rev. Joleen DuBois, 10:00 a.m., Creekside Center
- Tue. 26** Class: **Agni Yoga Study Group, Heart**, 7–8 p.m., WMEA Center
- Wed. 27** Class: **Discipleship & the Ageless Wisdom**, 7–8 p.m., WMEA Center

March 2008

- Sun. 2** Sunday Service: Meditation, Singing, and Lecture "**The Spiritual Teacher**" with Rev. Joleen DuBois, 10:00 a.m., Creekside Center
Noon: *Men's WMEA Study Group* – Prescott Pantry
- Tue. 4** Class: **Agni Yoga Study Group**, 7–8 p.m., WMEA Center
- Wed. 5** Class: **Discipleship & the Ageless Wisdom**, 7–8 p.m., WMEA Center
- Sun. 9** Sunday Service: Meditation, Singing, and Lecture "**How the Teaching Affects Life**" with Rev. Joleen DuBois, 10:00 a.m., Creekside Center
- Tue. 11** Class: **Agni Yoga Study Group**, 7–8 p.m., WMEA Center
- Wed. 12** Class: **Discipleship & the Ageless Wisdom**, 7–8 p.m., WMEA Center
- Sun. 16** Sunday Service: Meditation, Singing, and Lecture "**Self-Examination**" with Rev. Joleen DuBois, 10:00 a.m., Creekside Center
- Tue. 18** Class: **Agni Yoga Study Group**, 7–8 p.m., WMEA Center
- Wed. 19** **Sun Festival of Aries**, Meditation and Lecture with Rev. Valarie Drost, 7–8 p.m., WMEA Center
- Sun. 23** WMEA Annual Pre-Conference Gathering
- Tue. 25** NO CLASS – Conference Break
- Wed. 26** NO CLASS – Conference Break
- Sun. 30** Sunday Service: Meditation, Singing, and Lecture "**Transcending Ourselves**" with Rev. Joleen DuBois, 10:00 a.m., Creekside Center

Ask about classes for kids and teens on Sundays.

All Sunday lectures from Prescott are available on CD.

CDs are \$7.00 plus \$5.00 for postage and handling (increase due to new postal rates).

Please send your order to: WMEA, 543 Eastwood Drive, Prescott, AZ 86303.

WMEA Center: 543 Eastwood Dr., Prescott – Phone: (928) 778-0638 for information.

*Creekside Center: 337 N. Rush St., Prescott (Mail for WMEA will **not** be accepted at this address.)*

SUBSCRIPTION FORM

New Subscription/
Annual subscription donation: \$15

Subscription renewal
(Effective each December)

Donation
(other) \$ _____

Complete form and mail to:

White Mountain Education Association
P.O. Box 11975
Prescott, AZ 86304

Change of Address

Name _____

Address _____

City/State/Zip _____

PLEASE CLIP AND MAIL

The White Mountain Education Association
is a tax-exempt, non-profit organization.
Contributions to help support the publishing
and printing of
Meditation Monthly International
are tax exempt.

**White Mountain Education Association
is now publishing**
Meditation Monthly International
on the Internet.
Look for it on the World Wide Web
<http://www.wmea-world.org>

If you are in the following areas, you are welcome to call for information about the local White Mountain Study Group:

In Sarasota, Florida
Call (941) 925-0549

In Longmont, Colorado
Call (303) 651-1908

In Puerto Rico
Call (787) 780-6276

In Marysville, Ohio
Call (937) 642-5910

In Lebanon, Oregon
Call (541) 258-6142

White Mountain Education Association
P.O. Box 11975
Prescott, Arizona 86304